

COUCHES

ACCESSORIES

COMPATIBLE FOR

- Francis
- Francis AV
- Francis AV 2.0 (Bariatric)
- Francis AV 3.0
- Francis AV 4.0 - 2 in 1 Couch
- Francis Scale
- Francis Scale AV

FROM PAG. 2 TO PAG.5

- Active 100
- Active 120
- Physio
- Francis EL

PAG. 6

COMPATIBLE FOR

Francis
Francis AV
Francis AV 2.0 (Bariatrico)
Francis AV 3.0
Francis AV 4.0 - Lettino Combo 2 in 1
Francis Scale
Francis Scale AV

AC4/L



Adjustable IV pole in stainless steel with 2 or 4 hooks.

AC5L/1



150 mm twin wheels, swivable and with integrated stand, braking system and total lock though bilateral pedals.

AC11



Rollrest support located on the backrest.

AC17P/A



Rechargeable battery with 2 charger included.

AC50L



Cable support.

AC107



Motorized backrest.

AC111



Backrest section with face hole.

AC137



Anatomical armrest in polyurethane with metal structure. They follow the movement of the backrest and are tiltable to facilitate patient's transfer from the device to another. External adjustment extremely useful during anesthetic procedures for Francis, Francis Scale and Francis 2.0

AC137/1



Pair of multifunctional padded armrests, removable, manually movable, adjustable in height, rotatable, adjustable horizontally with respect to the DIN bar seat for Francis 3.0 and Francis 4.0.

AC138



Lying surface with removable section

AC139

Foot controls located on the floor. They can be placed around the device according to user's needs. They allow to control the height adjustment.

AC139/1

Foot controls located on the floor. They can be placed around the device according to user's needs. They allow to control the backrest adjustment.

AC139/2

Foot controls located on the floor. They can be placed around the device according to user's needs. They allow to achieve the Trendelenburg position and the reverse Trendelenburg position.

AC141

Foot controls located on the frame. They allow to adjust the height of the device.

AC141/1

Foot controls located on the frame. They allow to adjust the backrest.

AC141/2

Foot controls located on the frame. They allow to achieve the Trendelenburg position and the reverse Trendelenburg position.

AC107



Motorized backrest. It can be activated through footswitches located in front of the device.

AC177



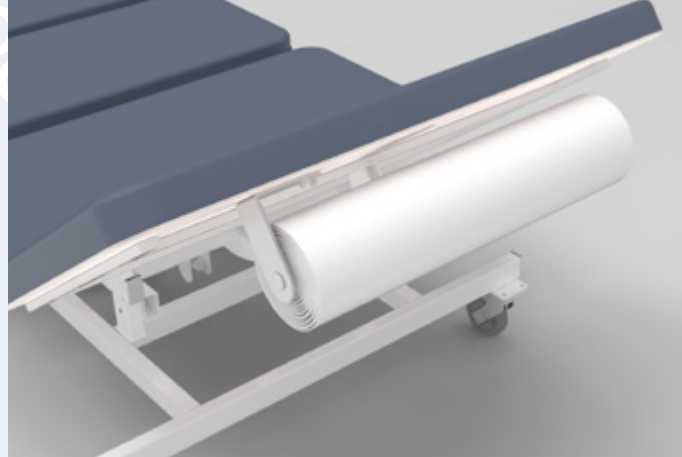
Side handle for arms/hands

COMPATIBLE FOR

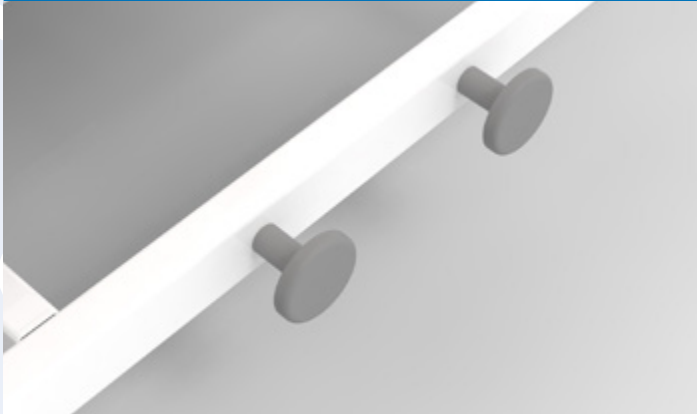
Active 100
Active 120
Physio
Francis EL

AC4/L

Adjustable IV pole in stainless steel with 2 or 4 hooks.

AC11

Rollrest support located on the backrest.

AC50L

Cable support.

AC107

Motorized backrest.

AC107/1



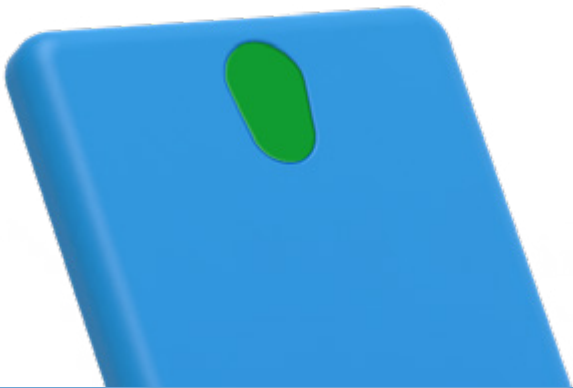
Motorized femoral for Physio couches

AC107/2



Motorized leg section for Physio couches

AC111



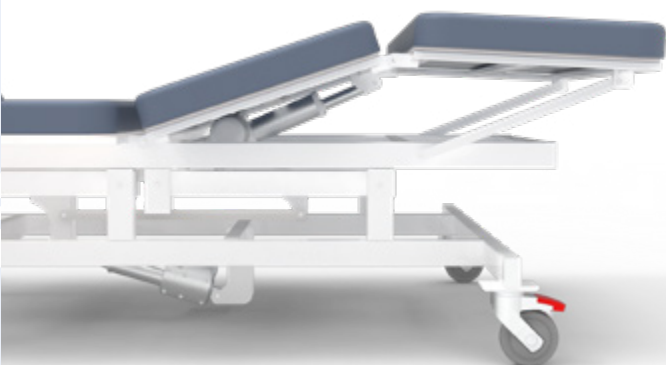
Backrest section with face hole.

AC139



Foot controls located on the floor. They can be placed around the device according to user's needs. They allow to control the height adjustment.

AC182



Motorized femoral
ONLY COMPATIBLE for Active 100 couches - Version 3.0 - Floor 4 sections and Active 120 couches- Version 3.0 - Floor 4 sections

AC183



4th swivel wheel with directional locking